

<b>Meeting:</b>	<b>Safer Bromley Partnership Strategic Group</b>
<b>Date:</b>	<b>21<sup>st</sup> March 2013</b>
<b>Subject:</b>	<b>Residential Burglary Analysis (April – September 2012) - Update</b>
<b>Author:</b>	<b>Pratheepan Jeyapragasam, Senior Crime Analyst</b> pratheepan.jeyapragasam@bromley.gov.uk

## **1 SUMMARY**

- 1.1 This report is an update, further to the Report presented to the Partnership on December 13<sup>th</sup> 2012, as requested by the Partnership Members. The Report is in relation to further analysis of Burglary in Bromley between April and September 2012. The two burglary offences previously covered by the analysis are presented again in this report with further analysis of the Wards, as requested. The data is presented under each of these two offences, being burglary in a dwelling and burglary in other buildings
- 1.2 The analysis reiterates the key factors in the current pattern of residential burglary and it is proposed that these key factors be tackled in order to facilitate a reduction in offending. Further, the report recognises the importance of analysis of victim data and recommends that further work is undertaken in this area.

## **2 RECOMMENDATION**

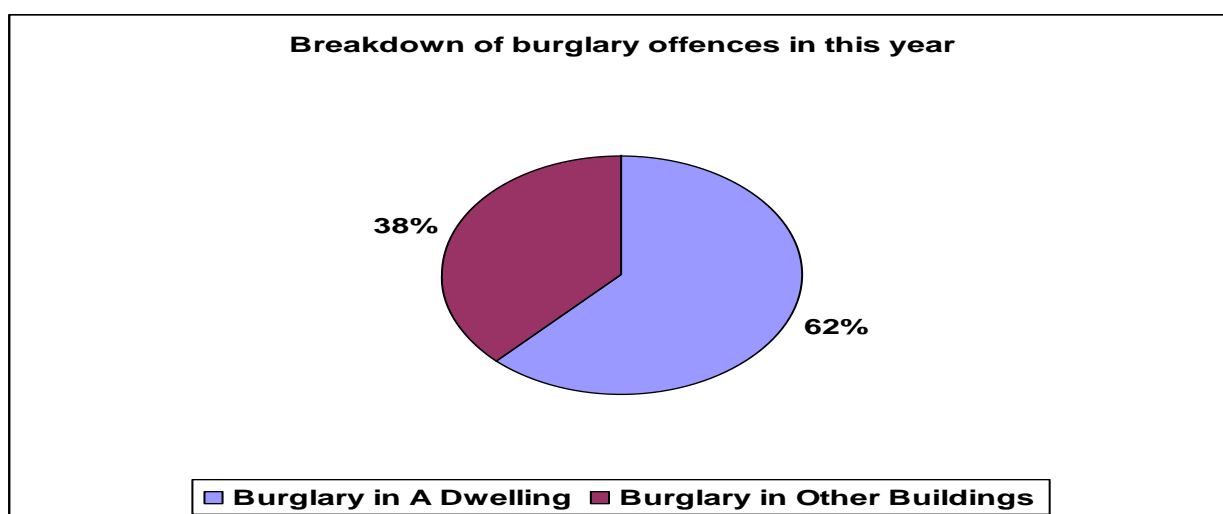
- 2.1 The Strategic Group is asked to note the original information contained within this report and the additional analysis, by Ward, of times that offences were reported.
- 2.2 Continue regular monitoring of trends in details of Burglaries and task resources as suggested by that analysis.

## **3 BACKGROUND INFORMATION**

- 3.1 At the October 2012 Safer Bromley Partnership, the Performance Management Report revealed a 17% increase in Burglary in the previous quarter. Further, it was noted that Bromley's rate was higher than the London average. In the subsequent meeting a report was provided investigating the reasons for this increase. The Partnership asked for further analysis of the statistics by Ward, which is provided in the Report, paragraphs 3.7 and 3.13. The original data is also reproduced for consistency. The reference still refers to the original time period of 1<sup>st</sup> April 2012 to 30<sup>th</sup> September 2012.

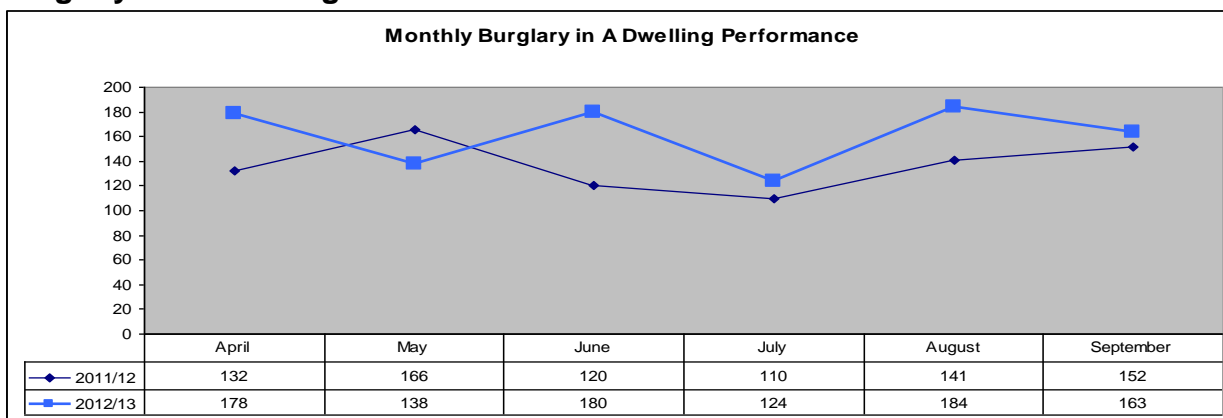
3.2 From April 2012 to June 2012 (Q1), Bromley's rate of Burglary has been substantially higher (162 offences) than the Metropolitan Police average. Between July 2012 (Q2) and September 2012 Bromley's rate was also higher than the average for most similar Metropolitan Police average, although this trend appears to have decreased (94 offences) over the Q2 period.

3.3 Chart 1 below shows the proportion of Total Burglary falling into the two types of burglary in this year.

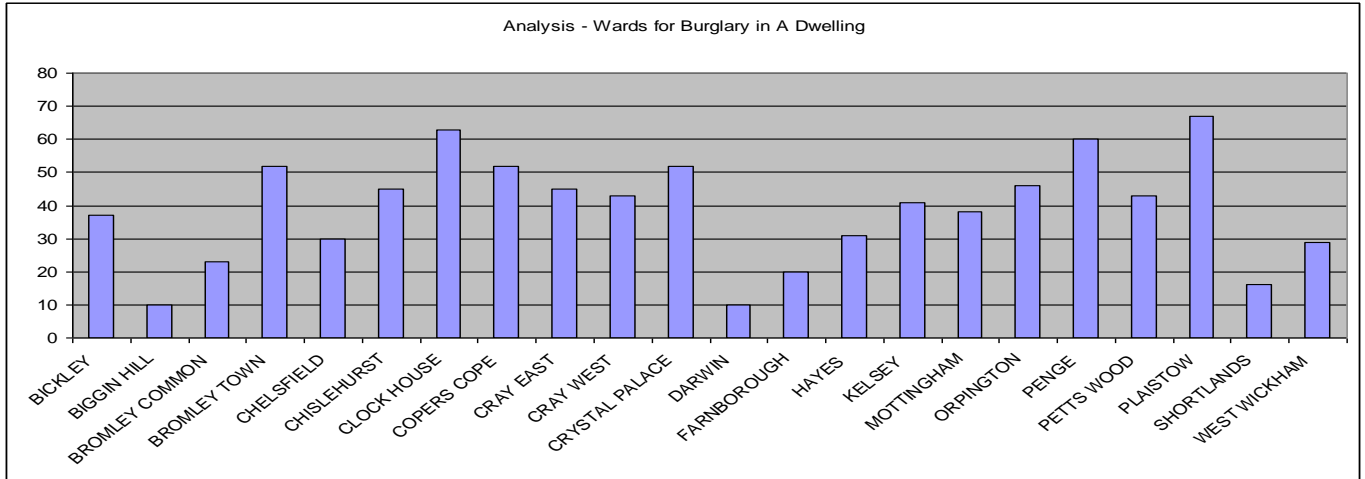


3.4 As shown in the Chart above, 62% of burglary offences were Burglary in A Dwelling offences.

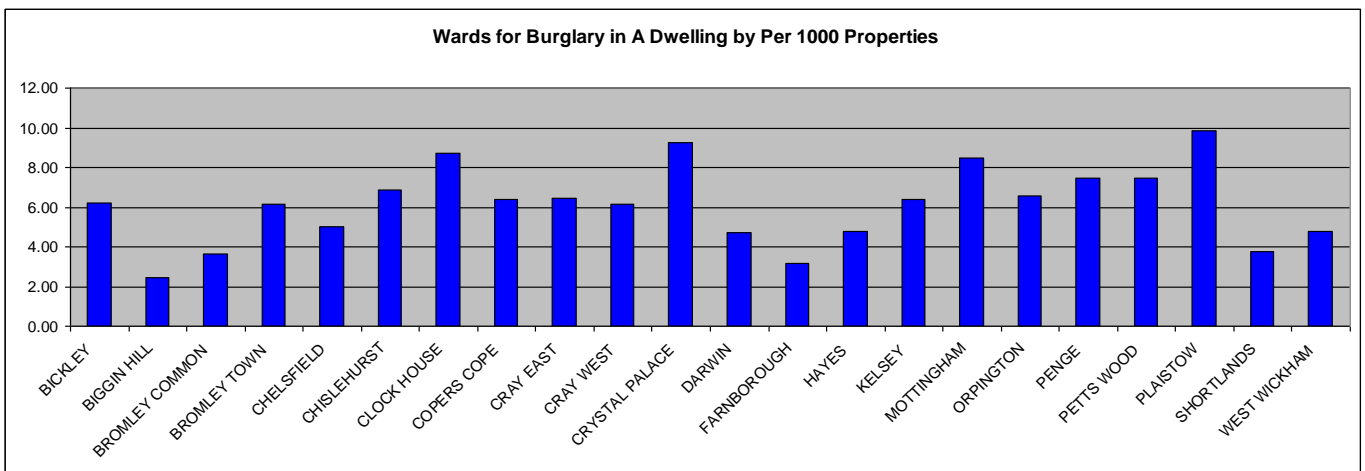
## Burglary in A Dwelling



3.5 As shown above, Burglary in a Dwelling Offence numbers peaked in April, June and August this year, which is contrary to the seasonal trends.

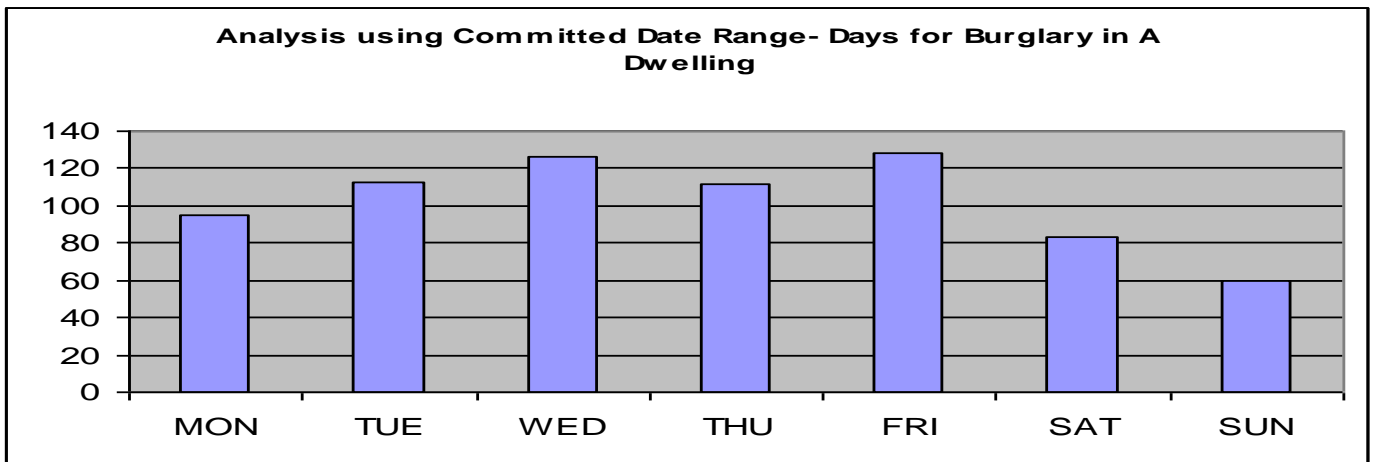


3.6 There are three main hotspot locations for Burglary in a Dwelling, Penge, Clockhouse, and Plaistow. Based on current issues affecting Bromley Borough these locations remain the main focus for the Police.

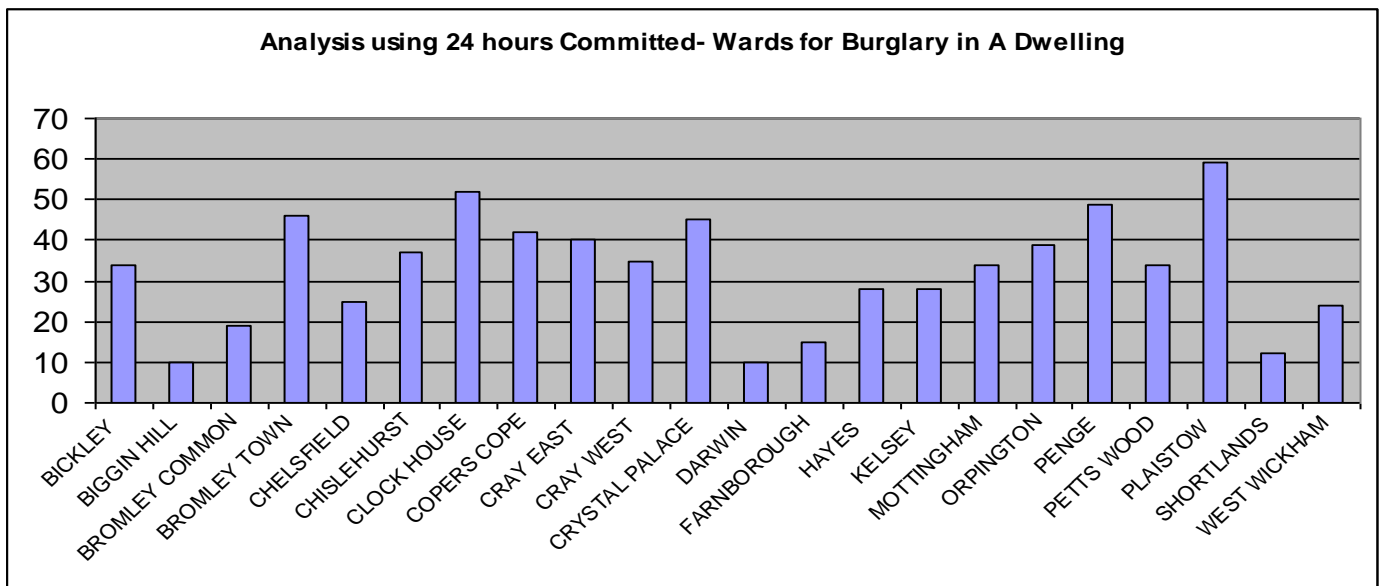


3.7 The chart above shows that Clockhouse, Crystal Palace and Plaistow were the three wards which have highest Burglary offences reported in the reporting period compared with number of properties in each wards

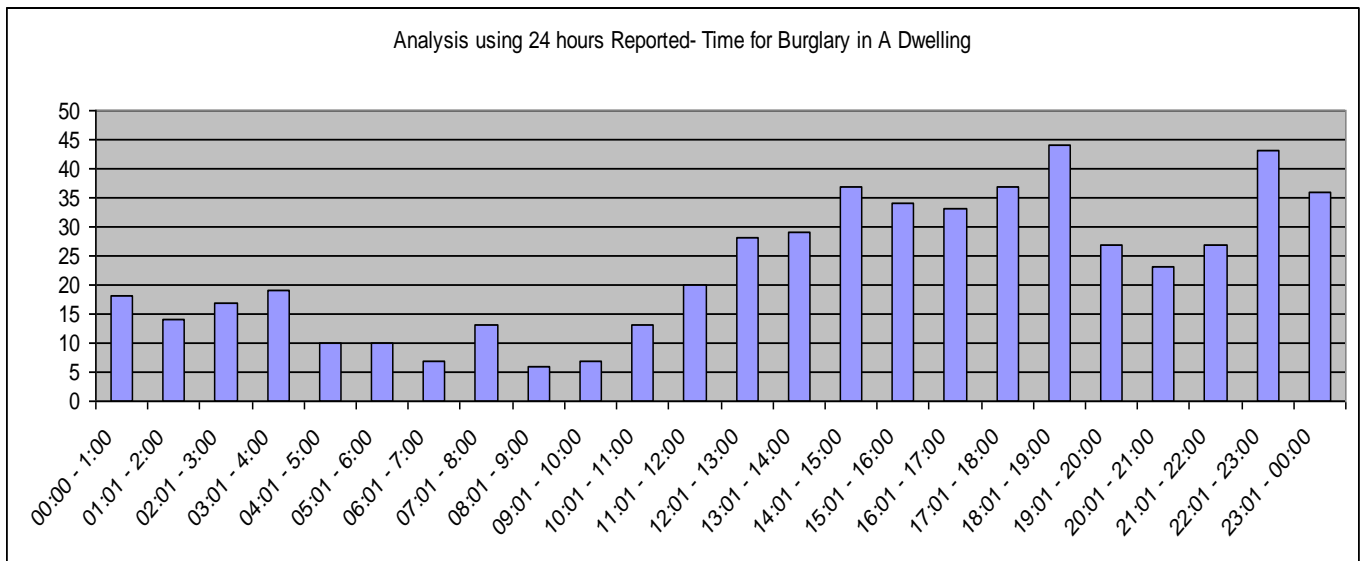
3.8 84% of the total Burglary in a Dwelling Offences were reported within 24 hours period this shows that Burglary actually occurred within the 24 hours.



3.9 Based on the above, 84% offences over the past two Quarters, there is a peak on Friday and Wednesday for offences. However, on further analysis, they are fairly spread out throughout the weekdays. It must be noted that weekend has seen the least number of offences reported.

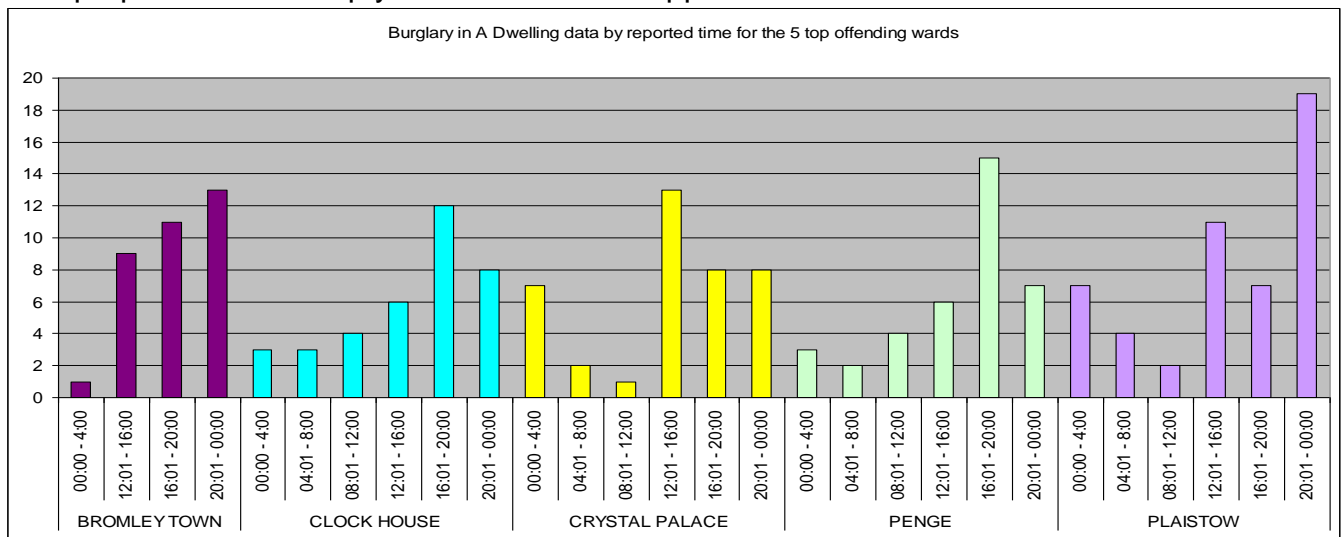


3.10 As shown above, Penge, Clockhouse, and Plaistow were the three main hotspots for Burglary in a Dwelling which was reported within 24 hours.

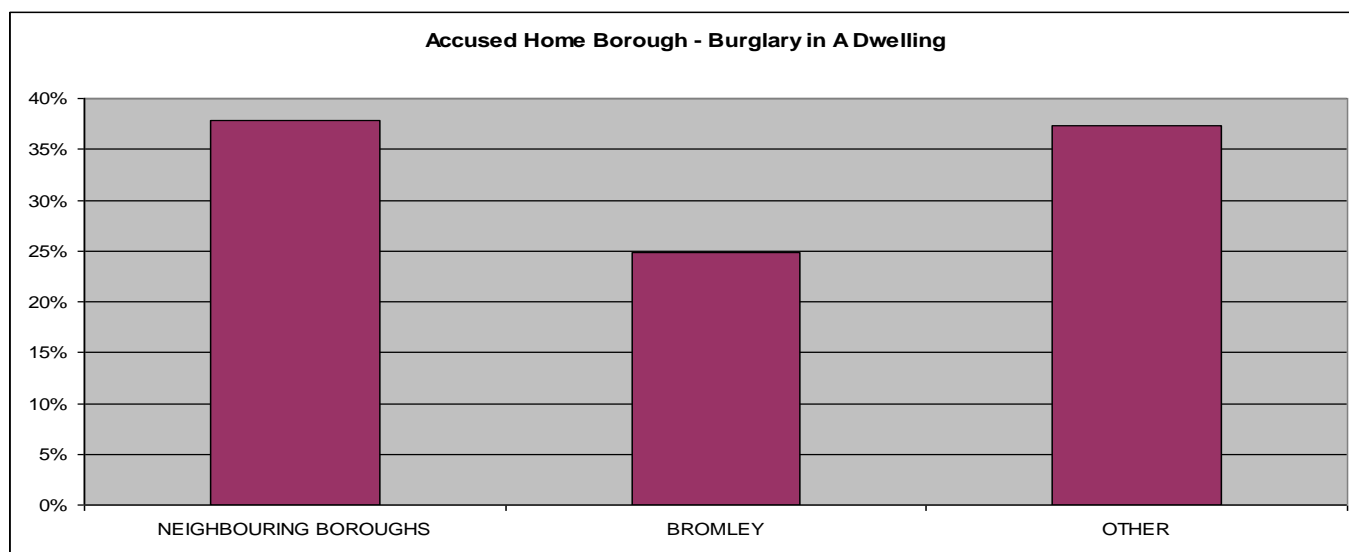


3.11 Burglary in a Dwelling reports seems to peak between the hours of 18:00 -19:01 and 22:01-23:00, when about 43% of reports were received during 18:01-23:00 period, of these 84% of the properties were empty more than one hour.

3.12 136 Burglary in a Dwelling offences were reported to police in this reporting period where properties were empty when this crime happened.



3.13 The above chart shows the number of Burglaries reported to the police, this is illustrated by times, and the chart shows the top five offending wards. Overall there are no specific trends identified, reported times varied in each Ward.



3.14 As can be seen 75% of accused offenders live out of Borough mainly, 28% live in Greenwich and another 28% live other Police force areas.

3.15 There were no specific targets victims identified, in general there were some vacant properties targeted either renovated or residents on holiday